



*A Climate Asia & Arthan Foundation Initiative*

# Toolkit

## Mapping Your Informal Network



# Introduction

Welcome to the Leadership Transition & Endorsement Networking Map Toolkit.

- This customizable tool helps leaders map their networks for a smooth career transition and secure meaningful endorsements.
- Use this toolkit to visualize connections, identify key stakeholders, and strategize your next move.

## Why Mapping Your Network Matters

- Transitioning from a workplace or career progression requires a strong support system.
- Mapping connections helps you leverage relationships effectively.
- A structured approach to networking increases opportunities for career growth and endorsements.

# Creating Your Networking Map

## Step 1



Identify your key relationships

## Step 2



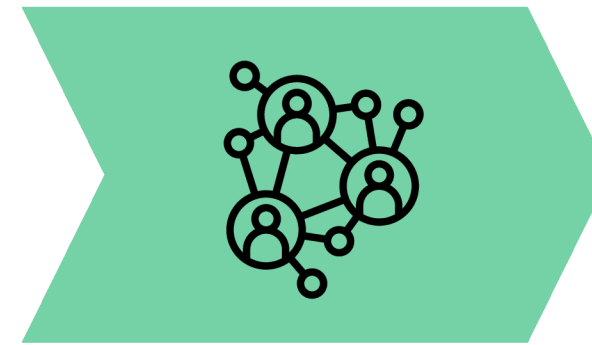
Categorize them into the key components

## Step 3



Strategies for strengthening your Network

## Step 4



Develop an action plan for outreach and engagement

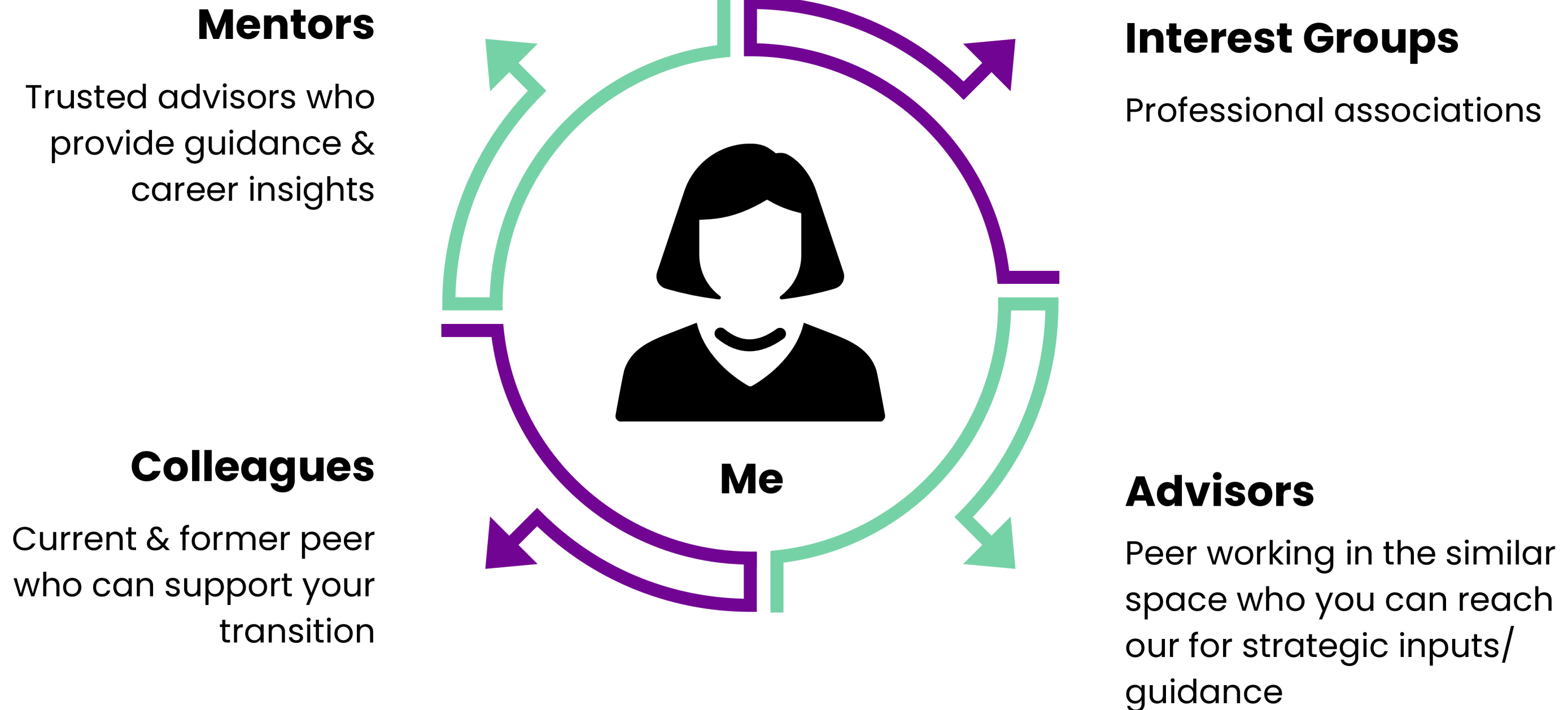
## Step 5



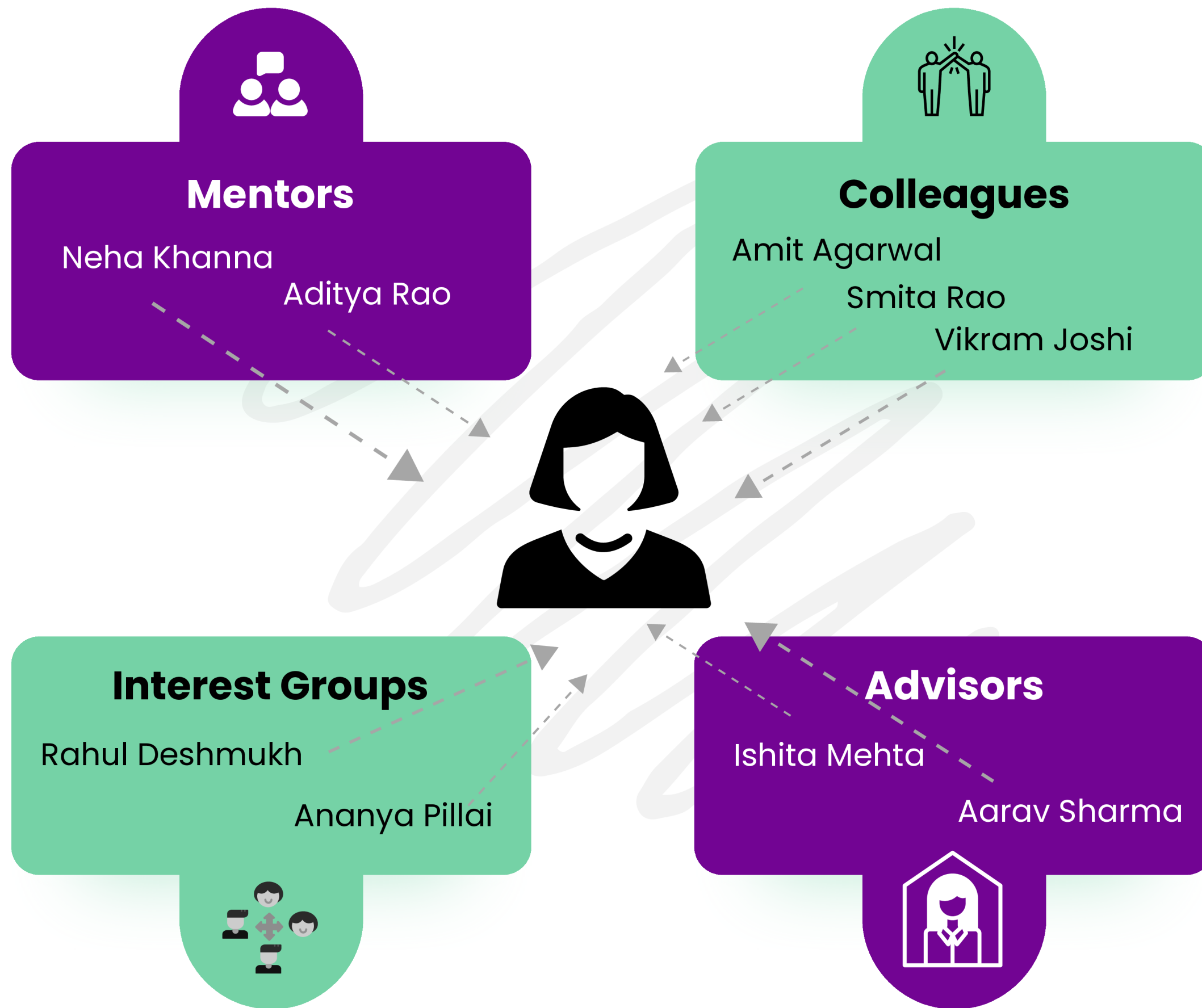
Suggested Examples for Networking



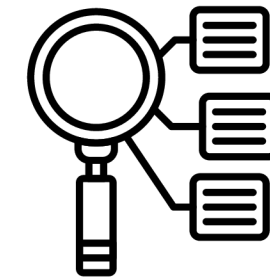
# Step 1 – Identify







## Step 2 - Categorize



- A visual representation of your network.
- Sections for different relationship categories: Mentors, Colleagues, Interest Groups, and Advisors.
- Editable fields to input names, roles, and connection types.
- Use color coding or icons to differentiate relationships.
- Assign a "distance" metric to each connection based on frequency and depth of interaction.
- Identify gaps and develop strategies to bridge them.

# Template:





# Step 3 – Strategize

## Leverage Thought Leadership

- Speak at industry conferences, panels, and roundtables
- Publish articles, white papers, or op-eds on leadership & expertise
- Join advisory boards of startups, nonprofits, or think tanks

## Strengthen Peer Connections

- Curate exclusive gatherings of senior leaders for deep discussions
- Join executive peer groups or leadership consortiums
- Engage in mutual mentorship—learn from rising leaders while mentoring others



## Expand High Value Connections

- Foster relationships with CXOs, board members, and policymakers
- Build cross-industry alliances for fresh perspectives
- Develop long-term, trust-based professional relationships

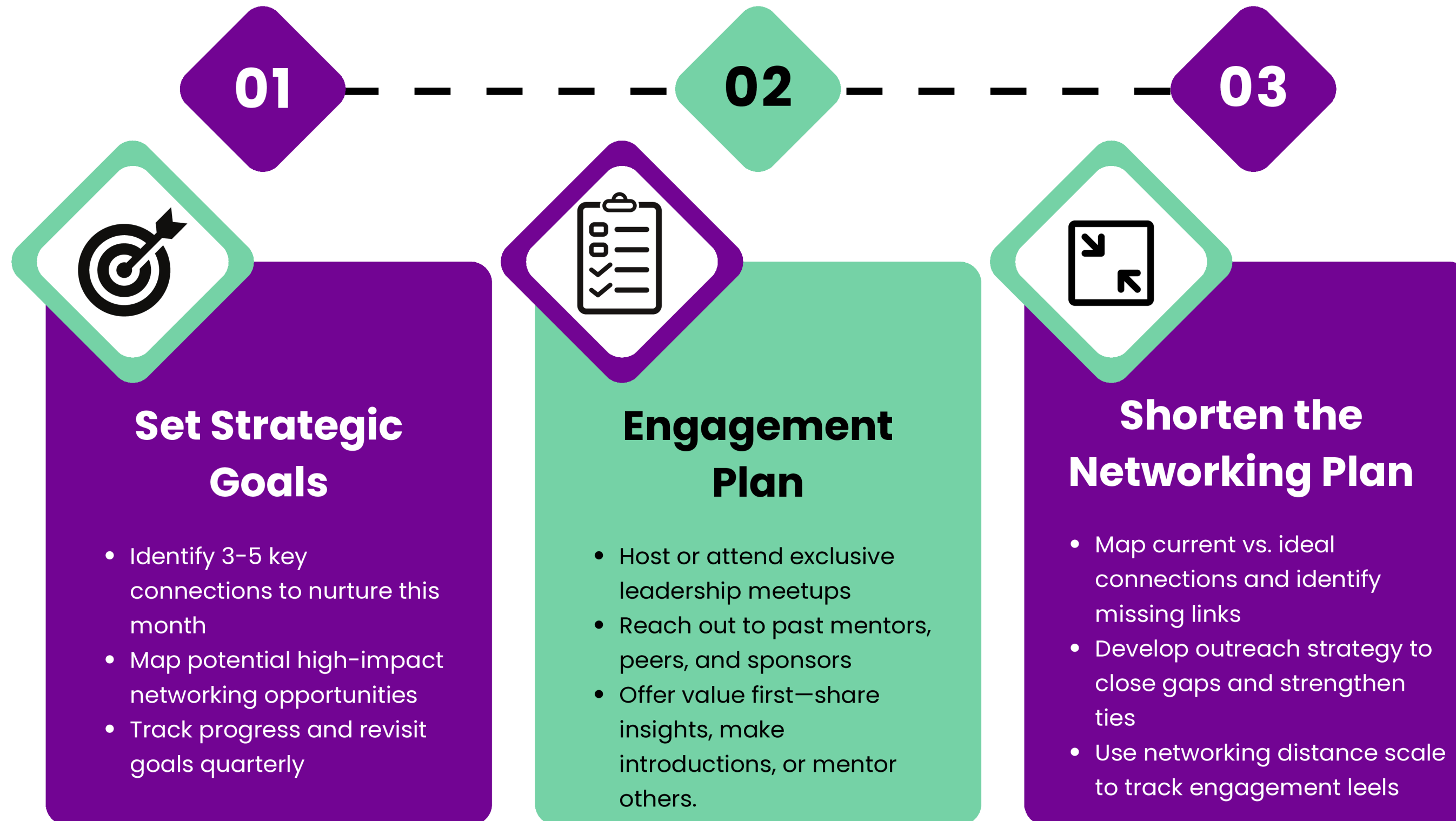
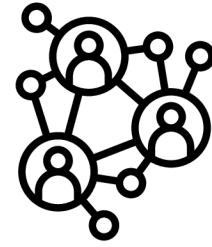
## Maximize Endorsement Impact

- Use recommendations in board applications, consulting proposals, or thought leadership profiles
- Highlight endorsements in media features and professional bios
- Leverage testimonials for speaking engagements, advisory roles, and new opportunities

## Position Yourself for High-Value Endorsements

- Personal Branding: Strengthen your LinkedIn, website, and digital presence(ref to personal branding doc)
- Public Endorsements: Seek testimonials from senior leaders and peers
- Strategic Sponsorships: Engage with decision-makers who can advocate for you

# Step 4 – Action Plan





# Step 5 – Leadership Networks for Women in Social Impact



## 1. Leadership Development & Peer Networks

- EquiLead – Accelerating women’s leadership in social impact.
- ILSS Emerging Women’s Leadership Program – Leadership training for women in social impact.
- Women Leaders India Fellowship – A fellowship by Reliance Foundation & Vital Voices.
- Arthan – Women’s Leadership in the Development Sector
- Dasra’s Leadership Development Programs – Leadership development in social impact.
- Women on Boards Program by ISDM – Equipping women with skills to serve on nonprofit boards.

## 2. Women Entrepreneurs & Business Networks

- Indian Women Social Entrepreneurs Network (IWSEN) – Peer network for women entrepreneurs.
- Federation of Indian Women Entrepreneurs (FIWE) – Supporting women entrepreneurs across India.
- Women’s Indian Chamber of Commerce & Industry (WICCI) – Professional networking for women in business.
- Confederation of Indian Industry – Indian Women Network (CII-IWN) – A support network for corporate, professional, and entrepreneurial women.
- Indians for Collective Action (ICA) – Women Empowerment Program – Supporting social and economic empowerment of women and girls in India.

# Step 5 – Leadership Networks for Women in Social Impact



## 3. Corporate & Inclusive Leadership Networks

- Catalyst Women's Network – Focusing on workplace inclusion and leadership.
- Lean In India – Professional and peer mentorship for women.
- CII Centre for Women Leadership (COEWL) – Promoting corporate women leadership.
- Healthcare Businesswomen's Association (HBA) India – Empowering women in the healthcare business sector.
- Iron Lady – High-impact programs and a leadership community for women in India.

## 4. Global & Tech-Focused Networks

- Women in Tech Global Network – Connecting women in technology leadership roles.
- All Ladies League (ALL) – A global women's leadership platform.
- Her Circle – A digital platform for women to interact, engage, and collaborate.





A Climate Asia & Arthon Foundation Initiative

# Thank You!



**Sign up** to stay updated on upcoming events, valuable resources, and opportunities designed to support your leadership journey!